

# 901 McClintock Burr Ridge, IL

# LAND FOR SALE



## PROPERTY FEATURES

- ▶ 2.87 acres
- ▶ Asking \$1,750,000
- ▶ Less than 1/2 mile from I-55, County Line Rd, and I-294
- ▶ Park-like setting
- ▶ FAR 48,000 SF (38.3%)
- ▶ Zoned O2 PUD
- ▶ Cable, water, gas, electric, sewer, streets, irrigation, curb, gutter, sidewalk, and telephone

The information contained herein was obtained from sources deemed reliable, however, it has not been independently verified and no warranties, express or implied, are made as to the accuracy thereof. Any interested parties should have the experts of their choice inspect the property and verify all information.

Exclusive Sales Agent:

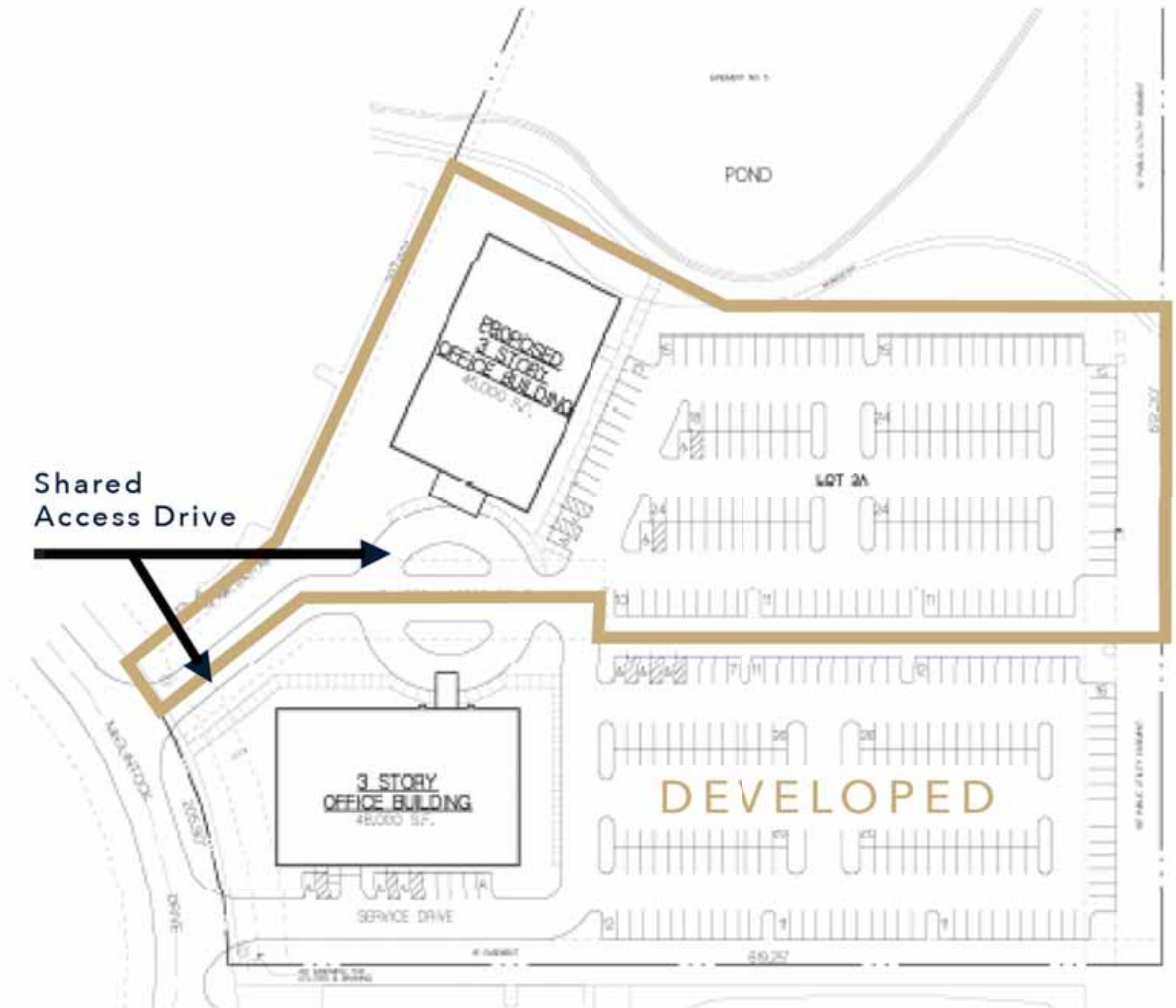
**WHITE CLOVER**  
COMMERCIAL REAL ESTATE

JIM HIGDON | [jim@whiteclovercre.com](mailto:jim@whiteclovercre.com) | 630 292 1855

# 901 McClintock Burr Ridge, IL

# LAND FOR SALE

## Proposed Site Plan



The information contained herein was obtained from sources deemed reliable, however, it has not been independently verified and no warranties, express or implied, are made as to the accuracy thereof. Any interested parties should have the experts of their choice inspect the property and verify all information.

Exclusive Sales Agent:

**WHITE CLOVER**  
COMMERCIAL REAL ESTATE

JIM HIGDON | [jim@whiteclovercre.com](mailto:jim@whiteclovercre.com) | 630 292 1855